

# GoFinder<sup>®</sup>

## INTERNATIONAL

### User Guide 2011

1. **Log in** using your username and password at the INTERNATIONAL Log In on the home page at [www.gofinder.net](http://www.gofinder.net)

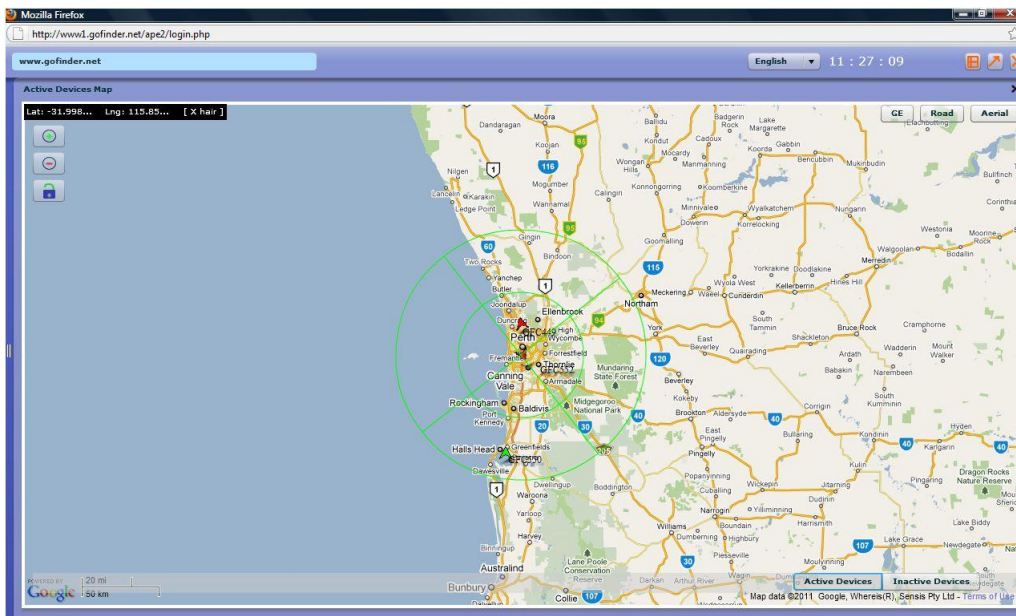


Note: You require a high bandwidth internet connection to access GoFinder tracking servers. Your PC must have FLASH 9.0 to run the client software.  
**Close this window after logging out.**

2. When you first log in to your account you will see **three panels**. All may be viewed or hidden. To hide the panel click the close button in the top right hand corner. To retrieve, drag each panel back by using the handles.

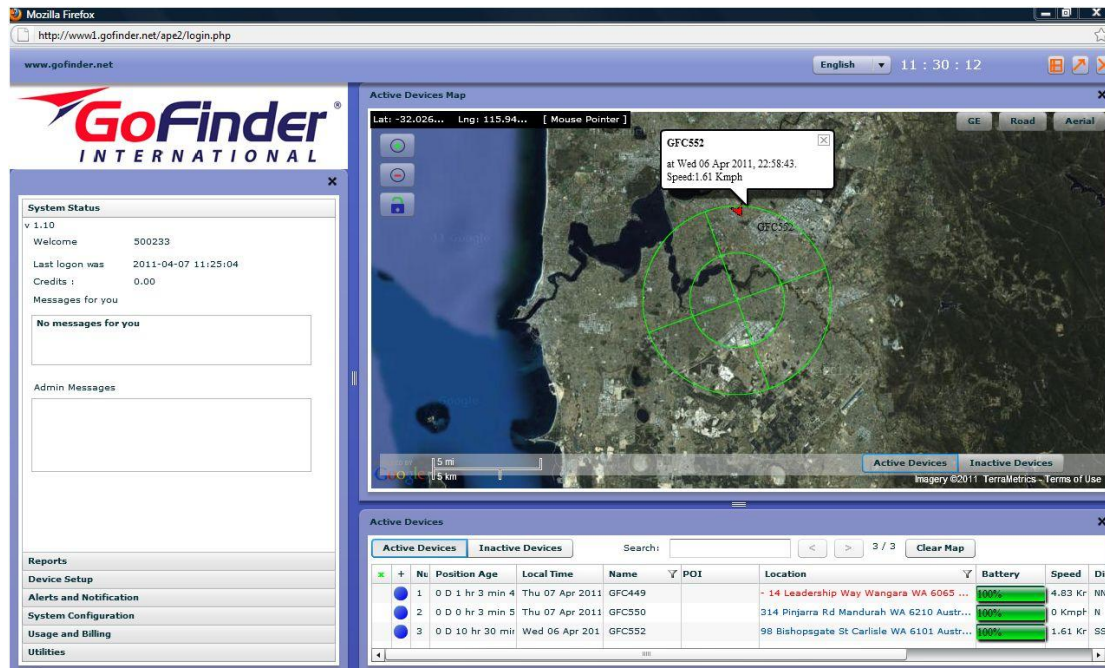
	No.	Position	Age	Local Time	Name	POI	Location	Battery	Speed	Di
	1	0	0	0 hr 59 min	Thu 07 Apr 2011	GFC449	- 14 Leadership Way Wangara WA 6065 ...	100%	4.83 Kr	NN
	2	0	0	0 hr 4 min	Thu 07 Apr 2011	GFC550	- 81 Anstruther Rd Mandurah WA 6210 A...	100%	56.33 K	S
	3	0	0	10 hr 26 min	Wed 06 Apr 2011	GFC552	98 Bishoppgate St Carlisle WA 6101 Austr...	100%	1.61 Kr	SS

- Left side is the Control Panel which is an accordion stack that can be expanded by clicking the mouse. Click on the appropriate button to enter.
  - The Map above the Dashboard shows the current location of the devices
  - The Dashboard is divided into two sections, Active Devices and Inactive Devices
    - Active Devices are those that have transmitted a fresh location in the last 24 hours
    - Inactive Devices are those that have not transmitted any data within the last 36 hours.
  - Your Credit Level reflects the number of SMS you have available for alerts
3. When opened the default **map** is that of the world. Click on a device address to display it at close range. If there are multiple devices all will be displayed. The + and – buttons at the top left of the map allow you to zoom in and out and the Padlock Icon will lock the map in a chosen position. To release that position click on the Padlock Icon again. On the map, the green circle indicated a device that has a position age of less than five minutes. Any position that is older than five minutes is shown as red. If a motion sensor is triggered by the slamming of a door, the device can send a fresh position turning the icon to green.

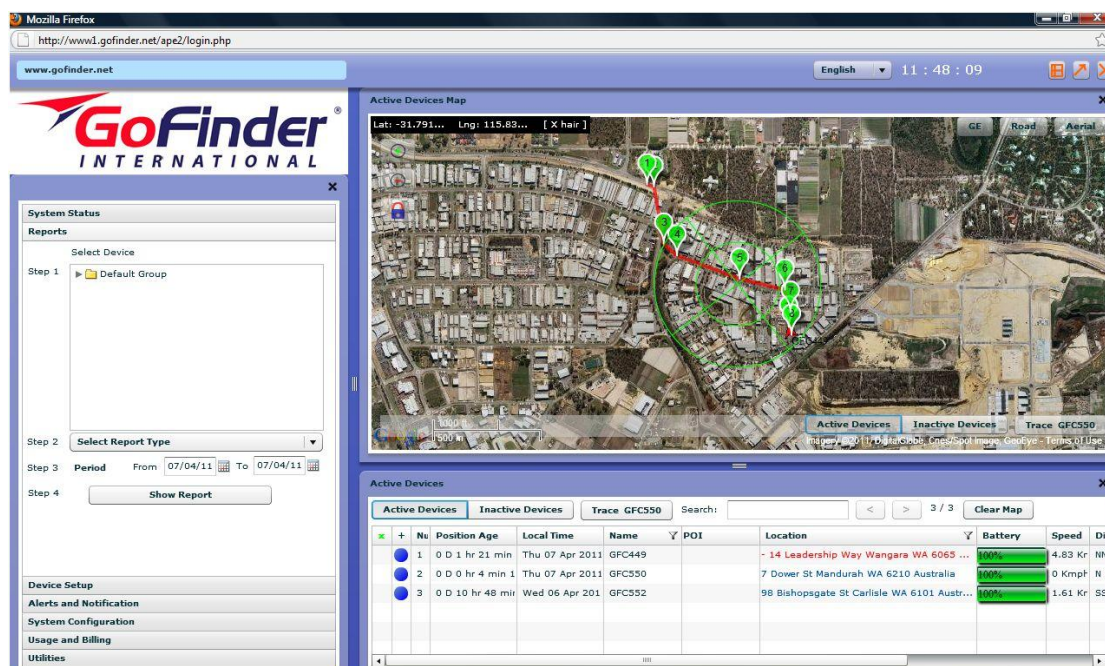


The map may be modified by type and scale by clicking on the buttons 'GE', 'Road' and 'Aerial'.

To utilise the GE function, Google Earth must be installed on your computer. A basic road map is displayed by default. Alternatively, Aerial gives a satellite style view. Google Earth overlaps the two options. Left, Right, Top and Bottom panning can be done by dragging the map with your mouse.



To plot a Trace of a device, click on the TRACE button at the bottom right hand corner of the map. Then select your option (last 10, 30 or 100 locations) from the pop-up menu. You may click on the green icon to see the time and address of each location.



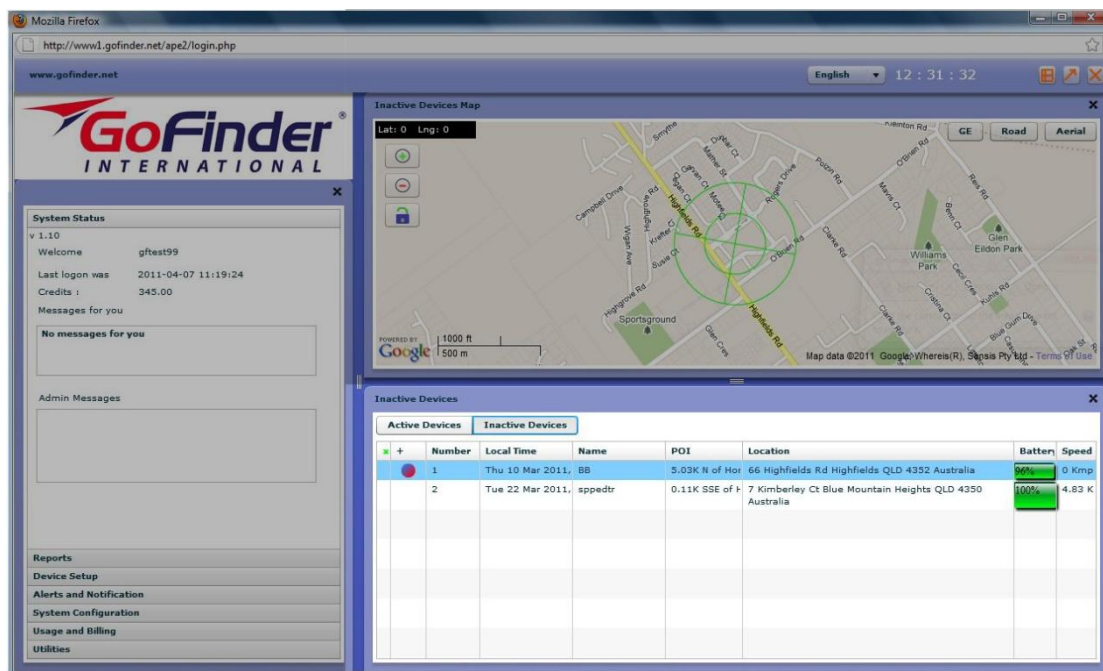
There are two buttons on the bottom right, Active and Inactive. If the device has been inactive for longer than 36 hours it will appear in the inactive column. They may be:

- In an area without GSM coverage
- Misread or lost transmission
- Device taken offline
- Device needs a reboot

4. The Blue Circle is an indicator that turns red if a **duress button** is pressed. Clicking the blue circle opens up a screen to send 'ack' to a device to shut down the duress alarm. The user of the device alarm will also need to shut down the alarm on the mobile menu; otherwise it will keep transmitting alerts.

An SMS can be sent from the web page to each monitored device. This becomes useful when you need to communicate immediately or identify and emergency.

If the text on the Dashboard is blue and the icon is green you have a location within the last five minutes. If the text on the Dashboard is in red then it means that the location sent from the device is not freshly computed and is waiting to send a new GPS position.



5. Currently there are two **Reports** available in real time
  - Last 10 messages – a quick way of seeing the immediate past history
  - History – this shows the messages received from the unit between two dates selected by the user.

Upon clicking on a location within the report a map is displayed

Depending upon your subscription profile further reports could be available. There are sent overnight so are normally for the previous day.

- Daily Time Sheet
- Vehicle Log Book
- Time At Site Report
- Speed Exception Report
- OBD Exception Report
- Daily Mileage Report
- Monthly Mileage Report

## The Report Bar

The screenshot shows the GoFinder International web interface. On the left is a navigation menu with sections like System Status, Reports, Device Setup, Alerts and Notification, System Configuration, Usage and Billing, and Utilities. The Reports section is expanded, showing a 'Select Device' dropdown with 'BB' and 'Easy' options, a 'Select Report Type' dropdown, and buttons for 'Last 10 Messages', 'History', and 'Battery History'. The main area features a map of an 'Inactive Devices' location and a table of 'Active Devices'.

Number	Local Time	Name	POI	Location	Battery	Speed
1	Thu 10 Mar 2011.	BB	5.03K N of Ho	66 Highfields Rd Highfields QLD 4352 Australia	95%	0 Kmph
2	Tue 22 Mar 2011.	spedtr	0.11K SSE of H	7 Kimberley Ct Blue Mountain Heights QLD 4350 Australia	100%	4.83 K

1. Click on the report bar and then click on the small grey arrow to see the list of your devices
2. Select a device
3. Select a date range
4. Select a report type

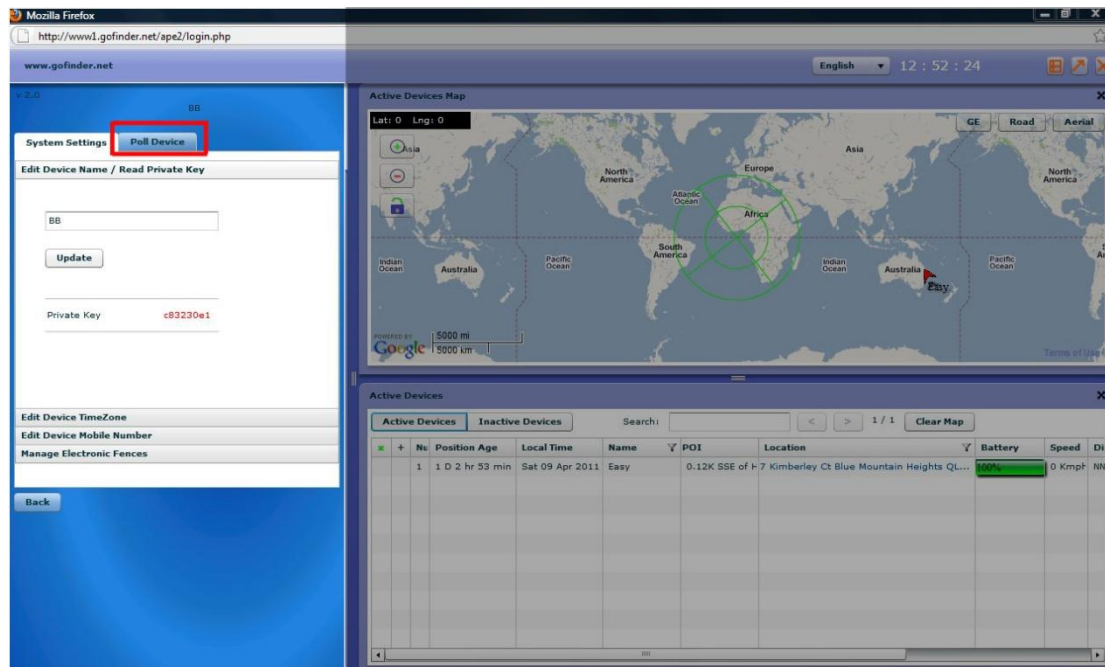
The report may be printed or exported to Excel via the CSV button.

The screenshot shows a detailed history report for device GFC449 from 01/02/2011 to 07/04/2011. The report includes a table with columns for Local Time, Server T, Log Type, Number, Location, Speed, Direction, Latitude, Longitude, Distance, and poi.

Local Time	Server T	Log Type	Number	Location	Speed	Directio	Latitude	Longitude	Distance	poi
2011-04-07, 08:31:17	2011-04-07, 08:32:00	Motion Stop / End of Journey	57823	GPS: Fix not attempted GSM Network OK Last GPS position is not current.						
2011-04-07, 08:30:59	2011-04-07, 08:32:00	Motion Detected	57824	14 Leadership Way Wangara WA 6065 Australia	4.83 Kmph	NRW	-31.7928511	115.8346489	Distance to next point awaited	
2011-04-07, 08:30:59	2011-04-07, 08:31:00	Motion Detected	57824	14 Leadership Way Wangara WA 6065 Australia	4.83 Kmph	NRW	-31.7928511	115.8346489	0 Km or 0 mi	
2011-04-07, 08:30:41	2011-04-07, 08:31:00	Motion Detected	57823	14 Leadership Way Wangara WA 6065 Australia	0 Kmph	N	-31.7931878	115.8347866	0.04 Km or 0.02 mi	
2011-04-07, 08:30:10	2011-04-07, 08:31:00	Motion Detected	57822	9-10 Leadership Way Wangara WA 6065 Australia	12.87 Kmph	S	-31.7922166	115.834737	0.11 Km or 0.07 mi	
2011-04-07, 08:29:48	2011-04-07, 08:30:00	Motion Detected	57821	31 Paramount Dr Wangara WA 6065 Australia	25.75 Kmph	E	-31.7912911	115.8344613	0.11 Km or 0.07 mi	
2011-04-07, 08:29:32	2011-04-07, 08:30:00	Motion Detected	57820	37 Paramount Dr Wangara WA 6065 Australia	49.89 Kmph	ESE	-31.7908336	115.8322258	0.22 Km or 0.14 mi	
2011-04-07, 08:29:05	2011-04-07, 08:29:00	Motion Detected	57819	11 Paramount Dr Wangara WA 6065 Australia	28.97 Kmph	ESE	-31.7898541	115.8291223	0.31 Km or 0.19 mi	
2011-04-07, 08:28:47	2011-04-07, 08:29:00	Motion Detected	57818	Hartman Dr Wangara WA 6065 Australia	45.06 Kmph	SSW	-31.7893623	115.8284653	0.08 Km or 0.05 mi	
2011-04-07, 08:28:27	2011-04-07, 08:29:00	Motion Detected	57817	Ocean Reef Rd Wangara WA 6065 Australia	30.58 Kmph	ESE	-31.7866974	115.8279886	0.27 Km or 0.17 mi	

## Polling a Mobile Device

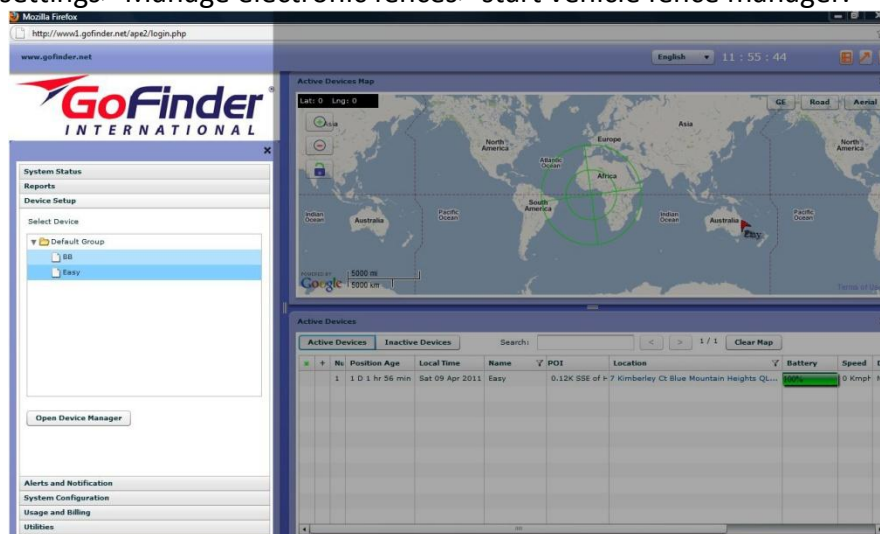
If the User has previously enabled the system by having AUTOSTART TRACK set to ON in the settings sub menu of the mobile, the device may be polled remotely. Go to Device Setup > Default Group > 'name' of device > Open device manager > Poll device > Put device into tracking mode.



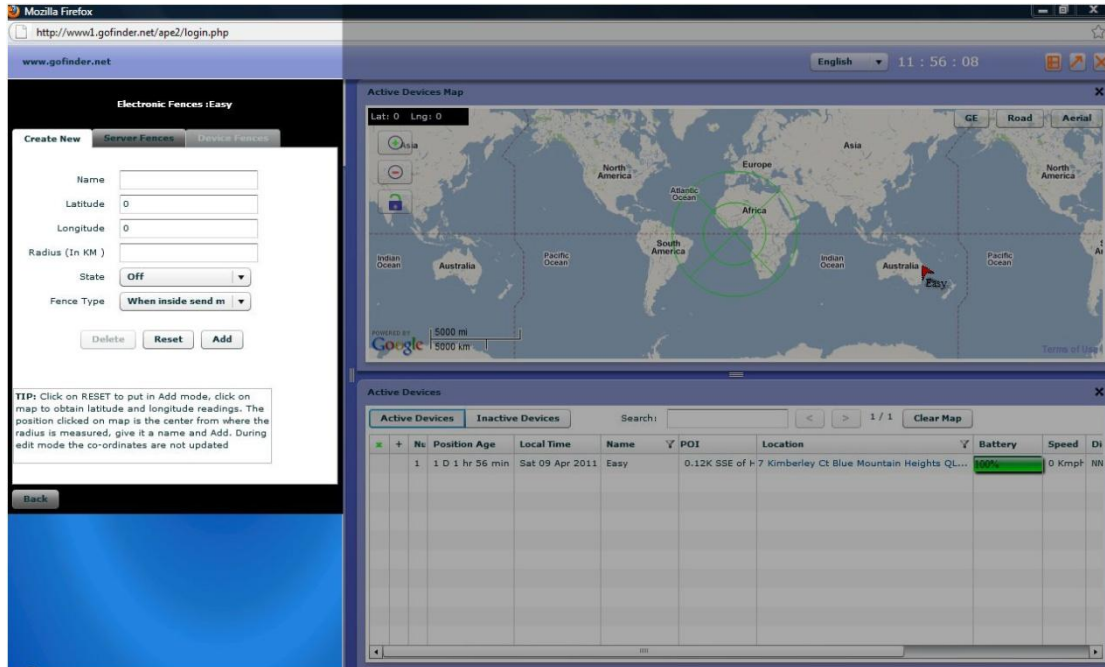
You will then receive a code ID message which confirms an SMS has been sent to the mobile and tracking is initiated. Upon receipt of the SMS the device starts the application on the mobile and starts tracking at the configured interval. The "trackon" SMS can also be sent from any other mobile phone to the phone number of the device.

## Electronic Fence

Setting up an Electronic Fence can only be done via your Gofinder tracking website. Go to Device Set up > Default Group > 'name' of device > Open device manager > System settings > Manage electronic fences > start vehicle fence manager.

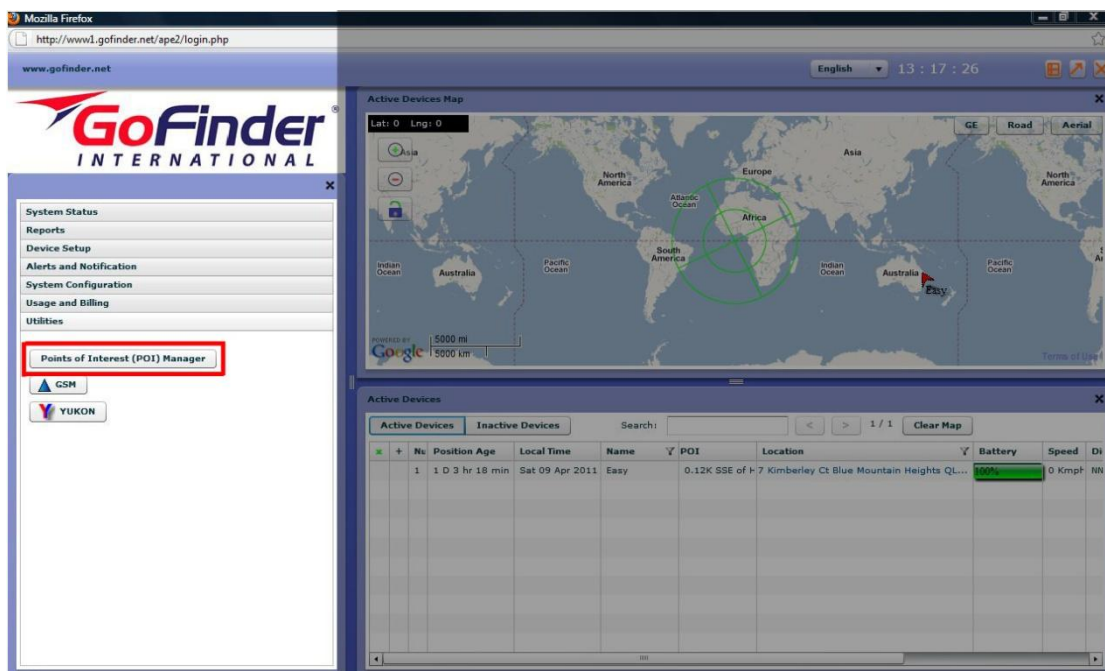


Enter required information> Name – Enter a name for your point of interest  
 >Latitude and Longitude –Just Click the location on the map and the coordinates will be entered automatically> Radius -1km (for Example)> State –active or inactive> Alert on Enter or Exit. The minimum range of the Geofence is 300m.

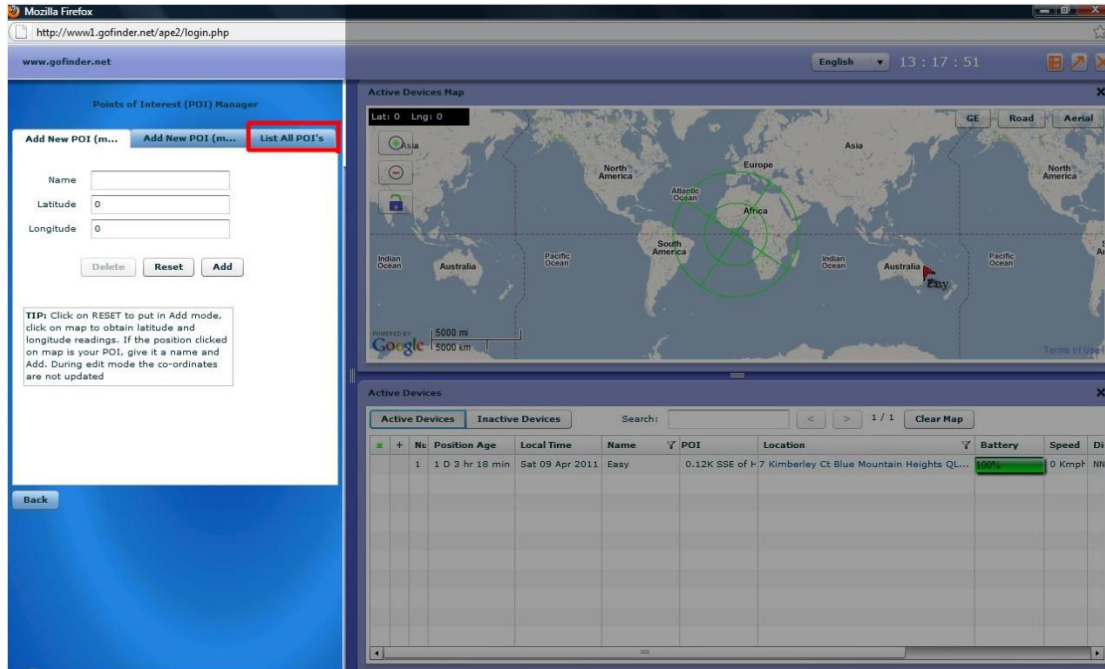


## Managing/Creating Points of Interest

To create a Point of Interest, log in to your Gofinder website, click Utilities > POI Manager.

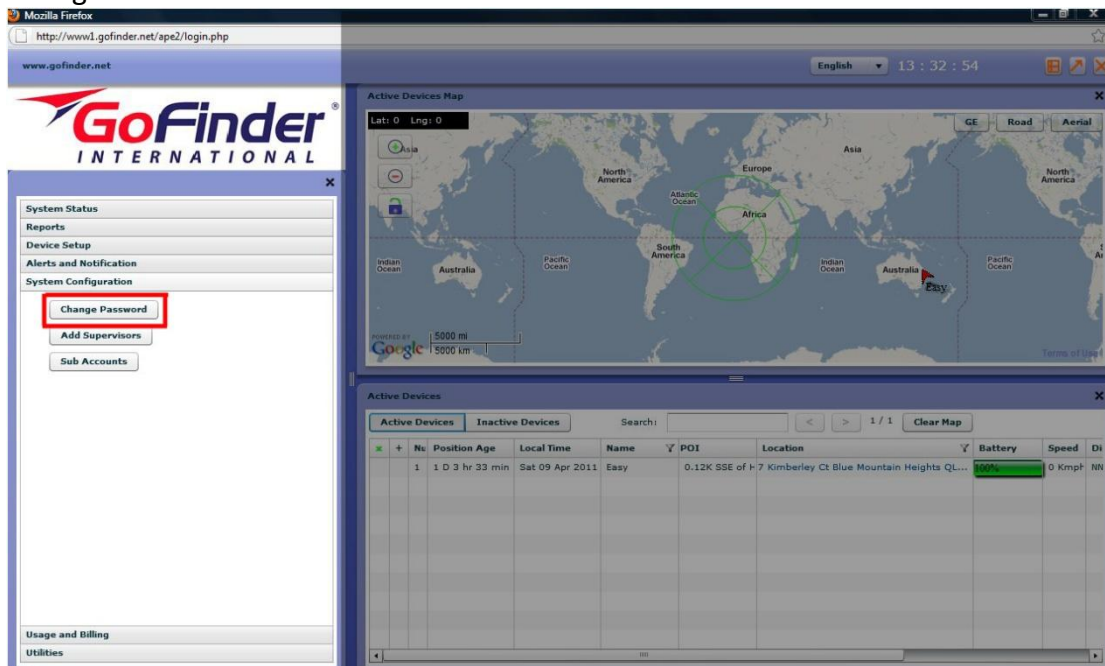


Then enter the POI name. To enter the latitude and longitude, find the desired POI on the map and left click the location. The latitude and longitude will be added automatically for you. From this window you can also click the 'List all POIs' tab to manage current POIs.



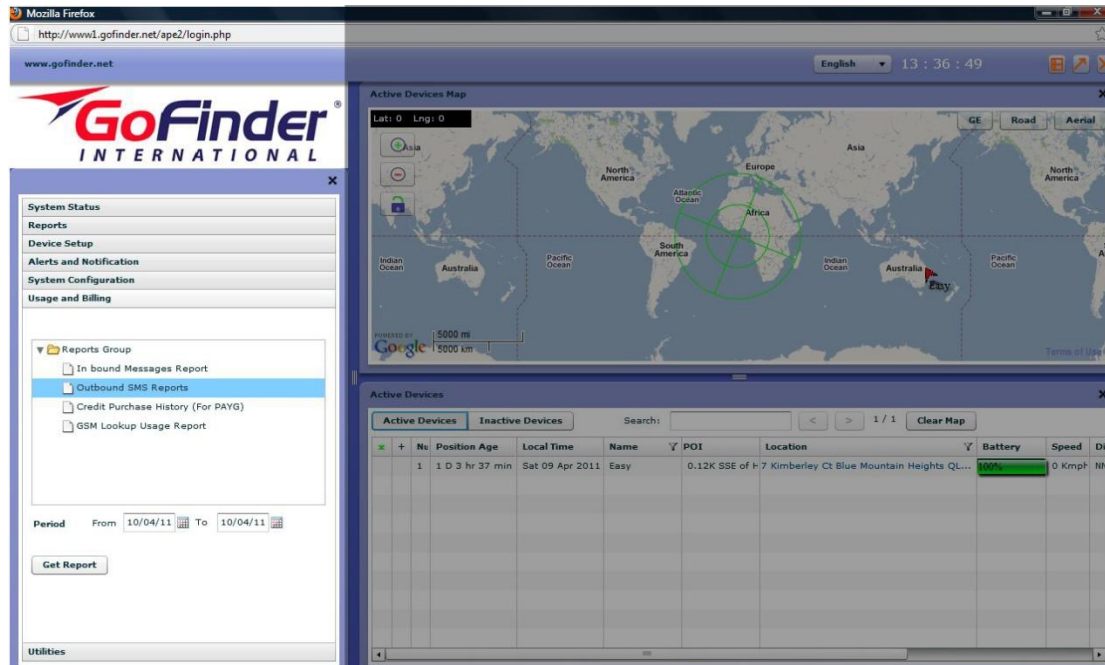
## Changing Password

To change your password, login to your account and select System Configuration > Change Password.



## Usage and Billing

The Usage and Billing section is where you can view credit purchase history and spending history reports. Select from the drop down menu the report you would like to view and the date range.



## How to Access Gofinder from a Mobile

Limited access to the website is available at <http://www1.gofinder.net/mobile/login.html>

Login using the User Name and Password supplied to you by Gofinder. From the device list choose the unit you wish to Locate. This can either be the last GPS position sent – or you can request GSM Triangulation. Location information is returned to the mobile including time, street address and POI.



## Setting Alerts

### **Adding a Supervisor**

1. Log in to your user account via [www.gofinder.net](http://www.gofinder.net)
2. Select **System Configuration** from the left hand panel
3. Select **Add Supervisors**
4. Enter your details
  - a. Your Twitter account username is entered with the @ symbol, e.g. @GofinderInt
  - b. The landline or cell number needs to be added with the area code, e.g. **07**46155450 or **614**27783333
5. Select **Add** and a confirmation box will pop up
6. Select **OK**
7. You may view your alert recipients by selecting the **List** tab
8. Once you have added a supervisor you may select what alerts they will receive
9. Your supervisor has now been set

### **Setting Alerts**

1. Log in to your user account via [www.gofinder.net](http://www.gofinder.net)
2. Select **Alerts and Notifications** from the left hand panel
3. Select **Default Group** and then the name of the device you wish to set alerts for
4. Select **Edit Settings**
5. Select **Alert Recipient** from the drop down menu at the top of the left hand panel
6. Choose your alert recipient
7. You may now click each of the headings (**Email alerts, SMS alerts, Twitter, Voice Calls Alerts on any phone**) and check either/both of the **Geofence Violation** or **SOS** boxes
8. Select **Save Changes**
9. Your alerts have now been set

### **Using Twitter**

- To create a Twitter account go to [www.twitter.com](http://www.twitter.com) and click **Get Started Now** on the right hand side of the screen
- Enter your details and follow the prompts to create your account
- Once your account is created click **Find People** on the top menu bar to 'follow' Phantom Eye
- Enter **Alerts\_Server** in to the search bar and search

- On the **Alerts\_Server** listing click the **Add Friend** button, represented by a plus sign and the outline of a person
- Once you are following Phantom Eye you are able to receive location updates if a geofences is violated or a SOS is alerted straight to your **Direct Messages** inbox, found on the right hand panel of your Twitter homepage

#### **Using Voice Call Alerts**

- Once Voice Call Alerts are set up using the above steps, an automated call will be sent to your nominated number and it will recite the date, time and address of the last reported location
- If this feature is activated due to an SOS being sent, you will receive a call every minute updating you on the location of the phone.

## **FAQs**

#### **Question:**

How do I log in?

#### **Answer:**

Go to [www.gofinder.net](http://www.gofinder.net) and click on "User Log In" or "International Log In" depending upon your subscription package. You will be sent a comprehensive User Guide with your account details.

#### **Question:**

What are the minimum system requirements?

#### **Answer:**

The PC must have Flash 9.0 installed. This may be downloaded from [www.adobe.com/support/flashplayer/downloads.html](http://www.adobe.com/support/flashplayer/downloads.html)

#### **Question:**

When I refresh the maps the position doesn't change on the screen... is this right?

#### **Answer:**

Yes, that is right, the refresh just refreshes the map with the current data and removes any previous data. It does not renew the data. The countdown refreshes the screen and data.

#### **Question:**

How can I get more accuracy with the Points of Interest?

**Answer:**

There are two ways to add a Point of Interest. One is by using the map and the other is by entering the degrees, minutes and seconds. In both methods 10 metre accuracy can be achieved. To do that, click the RESET button and then click on the map. Zoom down the map to the street level as far as possible to the + sign on the zoom slider. Now double click on the map and the map will venture on the point of the click and the coordinates will appear in the display on the left. Give the POI a name and save.

**Question:**

What happens when an electronic fence is entered or exited?

**Answer:**

When a fence has been entered or exited an alert will be sent to the user and it will be registered on the user's website.

**Question:**

How do I rename the device?

**Answer:**

Go to Configure/Manage your device>Default Group>name of device>Open device manager> Type in new name>update in your user account.

**Question:**

How do I edit the time zone?

**Answer:**

Go to Configure/Manage your device>Default Group>name of device>open device manager>system settings>edit device time zone.

**Question:**

How do I edit the mobile number?

**Answer:**

Go to Configure/Manage your device>Default group>name of device>open device manager> System settings>edit device mobile number

**Question:**

Can I poll the device for a position?

**Answer:**

Yes, if the User has previously enabled the system by having AUTOSTART TRACK set to ON in the settings sub menu of the mobile. Go to Configure/Manage your device>Default Group>name of device>Open device manager>Poll device>Put device into tracking mode. You will then receive a code ID message which confirms an SMS has been sent to the mobile and tracking is initiated. Upon receipt of the SMS the device starts the application on the mobile and starts tracking at the configured interval. The "trackon" SMS can also be sent from any other mobile

**Question:**

Can I then shut down tracking mode?

**Answer:**

Yes. Go to Configure/Manage your device>Default Group>name of device>Open device manager>Poll device>stop tracking mode. You will then receive a code ID message which confirms an SMS has been sent to the mobile and tracking has stopped. The "trackoff" SMS can also be sent from any other mobile.

**Question:**

How do I know how many SMS credits I have?

**Answer:**

On your web page simply scroll down and look at bottom left. You may buy more at [www.gofinder.net/online\\_shop](http://www.gofinder.net/online_shop) by emailing [sales@gofinder.net](mailto:sales@gofinder.net) or phoning 07 4615 5450

---

For further information email [support@gofinder.net](mailto:support@gofinder.net)

This document is for information purposes only. Gofinder reserves the right to change details as they see fit.

Gofinder has a policy of continuous improvement and reserves the right to modify or improve the specifications without notice. All products are supplied subject to our [Terms and Conditions](#).

